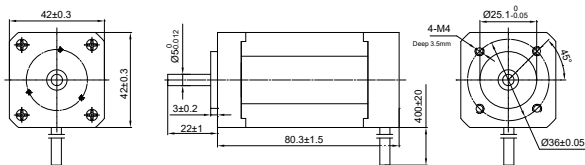
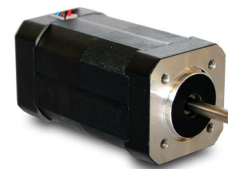


DRAWING (mm)



PHOTO

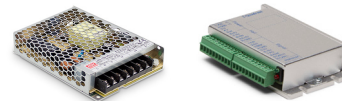


MODEL NO. DESIGNATION

B4280 - VOLTAGE

Example: B4280-24

ACCESSORIES



● C = customizations are offered on demand even for smaller quantities. Typical customizations are indicated with a green dot at column end. Please contact us for any customization request.

BRUSHLESS DC MOTOR DATA		B4280-24	C
Nominal voltage	V	24	
Commutator hall voltage	V	5 ~ 24	
No load speed	rpm	6100	
No load current	A	0.5	
Nominal speed	rpm	4000	
Nominal torque	mNm	190	
Nominal current	A	5	
Start/Stall torque	mNm	560	
Efficiency	%	67	
Nominal power	W	80	
Terminal resistance	Ω	0.43	
Terminal inductance	mH	0.71	
Torque constant	mNm/A	37	
Rotor inertia	gcm ²	72	
Bearing type		Ball bearing	
Axial play at axial load < 3.5 N	mm	0.14	
Axial play at axial load > 3.5 N	mm	0.14	
Radial play	mm	0.02	
Max. dynamic axial load	N	10	
Max. radial load ¹	N	28	

NOTES

1. 10 mm from flange.

OTHER BRUSHLESS DC MOTOR DATA		B4280-24	C
Number of pole pairs		4	
Number of phases		3	
Weight	g	650	
Operating temperature	°C	-20 to 50	
Max. winding temperature	°C	130	
Motor insulation class		B	
IP rating		IP40	
Hall sensors and power harness length	mm	400	●
Power harness		UL1430 AWG20	
Hall sensors harness		UL1430 AWG26	
Shaft length from flange	mm	22	●
Shaft diameter ø	mm	5	
Service life	h	10000	
Manufacturing standard		ISO9001 ISO14001 TS16949	

CABLE AND PIN CONFIGURATION				C
Power		Hall		
Phase	Cable color	Phase	Cable color	
U	YEL	HU	BLU	
V	RED	HV	GRN	
W	BLK	HW	WHT	
		+5V	RED	
		GND	BLK	