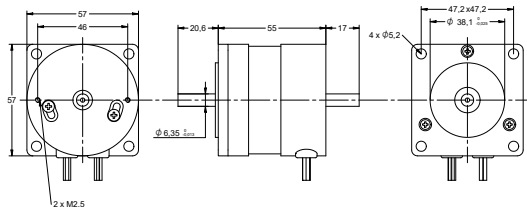


**DRAWING (mm)**

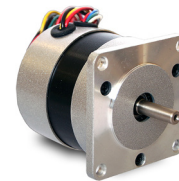


**MODEL NO. DESIGNATION**

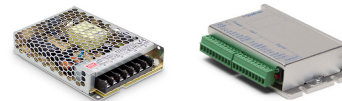
B5755 - VOLTAGE

Example: B5755-24

**PHOTO**



**ACCESSORIES**



● C = customizations are offered on demand even for smaller quantities. Typical customizations are indicated with a green dot at column end. Please contact us for any customization request.

BRUSHLESS DC MOTOR DATA		B5755-24	C
Nominal voltage	V	24	
Commutator hall voltage	V	5 ~ 24	
No load speed	rpm	5400	
No load current	A	0.5	
Nominal speed	rpm	4000	
Nominal torque	mNm	110	
Nominal current	A	2.8	
Start/Stall torque	mNm	330	
Efficiency	%	68	
Nominal power	W	46	
Terminal resistance	Ω	0.82	
Terminal inductance	mH	2.3	
Torque constant	mNm/A	39	
Rotor inertia	gcm <sup>2</sup>	75	
Bearing type		Ball bearing	
Axial play at axial load < 3.5 N	mm	0.025	
Axial play at axial load > 3.5 N	mm	0.025	
Radial play	mm	0.025	
Max. dynamic axial load	N	15	
Max. radial load <sup>1</sup>	N	75	

**NOTES**

1. 10 mm from flange.

OTHER BRUSHLESS DC MOTOR DATA		B5755-24	C
Number of pole pairs		2	
Number of phases		3	
Weight	g	500	
Operating temperature	°C	-20 to 50	
Max. winding temperature	°C	130	
Motor insulation class		B	
IP rating		IP40	
Hall sensors and power harness length	mm	330	
Power harness		UL1430 AWG20	
Hall sensors harness		UL1430 AWG26	
Shaft length from flange	mm	20.6	●
Shaft diameter ø	mm	6.35	
Service life	h	10000	
Manufacturing standard		ISO9001   ISO14001   TS16949	

CABLE AND PIN CONFIGURATION				C
Power		Hall		
Phase	Cable color	Phase	Cable color	
U	YEL	HU	BLU	
V	RED	HV	GRN	
W	BLK	HW	WHT	
		+5V	RED	
		GND	BLK	