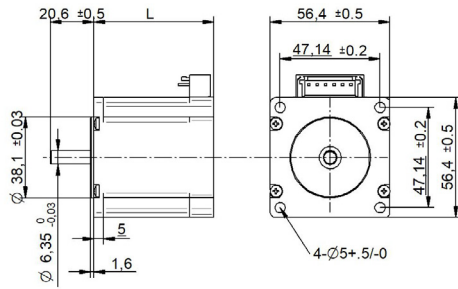


# SHC57-18 Series connector □ 57 mm

## DRAWING (mm)



## MODEL NAME DESIGNATION

SHW3520 - STEP ANGLE - CURRENT

Example: SHW35-09-100



## PHOTO



## OPTIONS MOTOR DRIVERS AND POWER SUPPLIES



## MOTOR FEATURES

Step angle	1.8
Step angle accuracy	± 5% full step no load
Shaft material	X8CrNiS18-9   303
Bearing type	Ball bearing
Radial play	0.02 mm   450 g
Axial play	0.08 mm   450 g
Max. radial force	75N   20 mm from shaft
Max. axial force	15N
Dielectric strength	600VAC   1 sec.
Insulation resistance	100MΩ   500VDC
Ambient temperature	-20° - (+50°)
Insulation class	Class B
IP rating	IP30
Connection harness	UL1430 AWG22   300 mm
Connector	JST B6P-VH

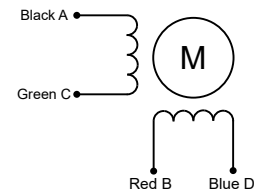
## CUSTOMIZATION EXAMPLES

- Shaft configurations
- Bearing type and preload
- Temperature range
- IP rating
- Winding and performance optimization
- Cabling and harness
- Gear box to motor combinations
- Encoder to motor combinations

## OPTIONS

- Stepper motor drivers Transmotec DS series
- Power supplies Transmotec LRS series

## EXCITATION SEQUENCE TABLE



PIN	1	4	3	6
CW	A	C	B	D
1	●		●	
2		●	●	
3		●		●
4	●			●
1	●		●	

● = + Polarity

## MOTOR DATA

Graph	A	B	C
Motor model	SHC5741-18-280	SHC5756-18-280	SHC5775-18-280
Holding torque Nm	0.60	1.40	2.30
Detent torque Nm	0.025	0.045	0.070
Rotor inertia gcm <sup>2</sup>	120	300	480
Current   phase A	2.80	2.80	2.80
Resistance   phase Ω	0.78	1.00	1.30
Inductance   mH	1.8	3.2	5.3
Length mm	40.5	56.0	76.5
Weight Kg	0.450	0.700	1.100

## SPEED | TORQUE PERFORMANCE GRAPH PULL OUT

Graph	A	B	C
Supply voltage VDC	48	48	48
Current   phase A	2.8	2.8	2.8

