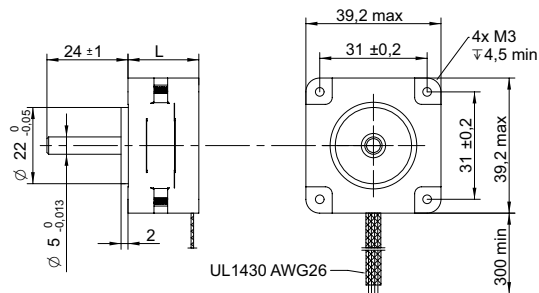


DRAWING (mm)



PHOTO



MODEL NO. DESIGNATION



Example: SHW3920-18-040

OPTIONS DRIVER AND POWER SUPPLY



● C = customizations are offered on demand even for smaller quantities. Typical customizations are indicated with a green dot at column end. Please contact us for any customization request.

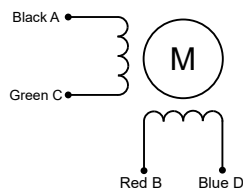
COMMON MOTOR DATA

Step angle	°	1.8	
Step angle accuracy ¹	%	± 5	
Shaft material		X8CrNiS18-9 SUS303	●
Bearing type		Ball bearing	●
Radial play ²	mm	0.02	
Axial play ²	mm	0.08	
Max. radial force ³	N	28	
Max. axial force	N	10	
Dielectric strength ⁴	V	600	
Insulation resistance ⁵	MΩ	100	
Operating temperature	°C	-20 to 50	●
Insulation class		Class B	
IP rating		IP30	●
Connection harness		UL 1430 AWG26 300 mm	●
Connector		Not in standard	●

MODEL-SPECIFIC MOTOR DATA

Model	SHW3920-18-040	SHW3931-18-030	SHW3934-18-040	SHW3938-18-050	
Graph	A	B	-	D	
Holding torque	mNm	85	180	210	360
Detent torque	mNm	8	10	12	12
Rotor inertia	gcm ²	0.12	0.18	20	0.2
Current phase	A	0.4	0.3	0.4	0.5
Resistance phase	Ω	6.6	40	30	24
Inductance	mH	7	30	43	50
Length	mm	20	31	34	38
Weight	kg	0.05	0.12	0.18	0.18

EXCITATION SEQUENCE TABLE



CW	A	C	B	D
1	●		●	
2		●	●	
3		●		●
4	●			●
1	●		●	

● = +Polarity

SPEED | TORQUE PERFORMANCE GRAPH PULL OUT

Graph	A	B	C	D	
Supply voltage	V	24	24	-	24
Current phase	A	0.42	0.42	-	0.45

NOTES

1. Full step no load.
2. 450 g load.
3. 20 mm from shaft.
4. AC, 1 second.
5. 500 V, DC.

